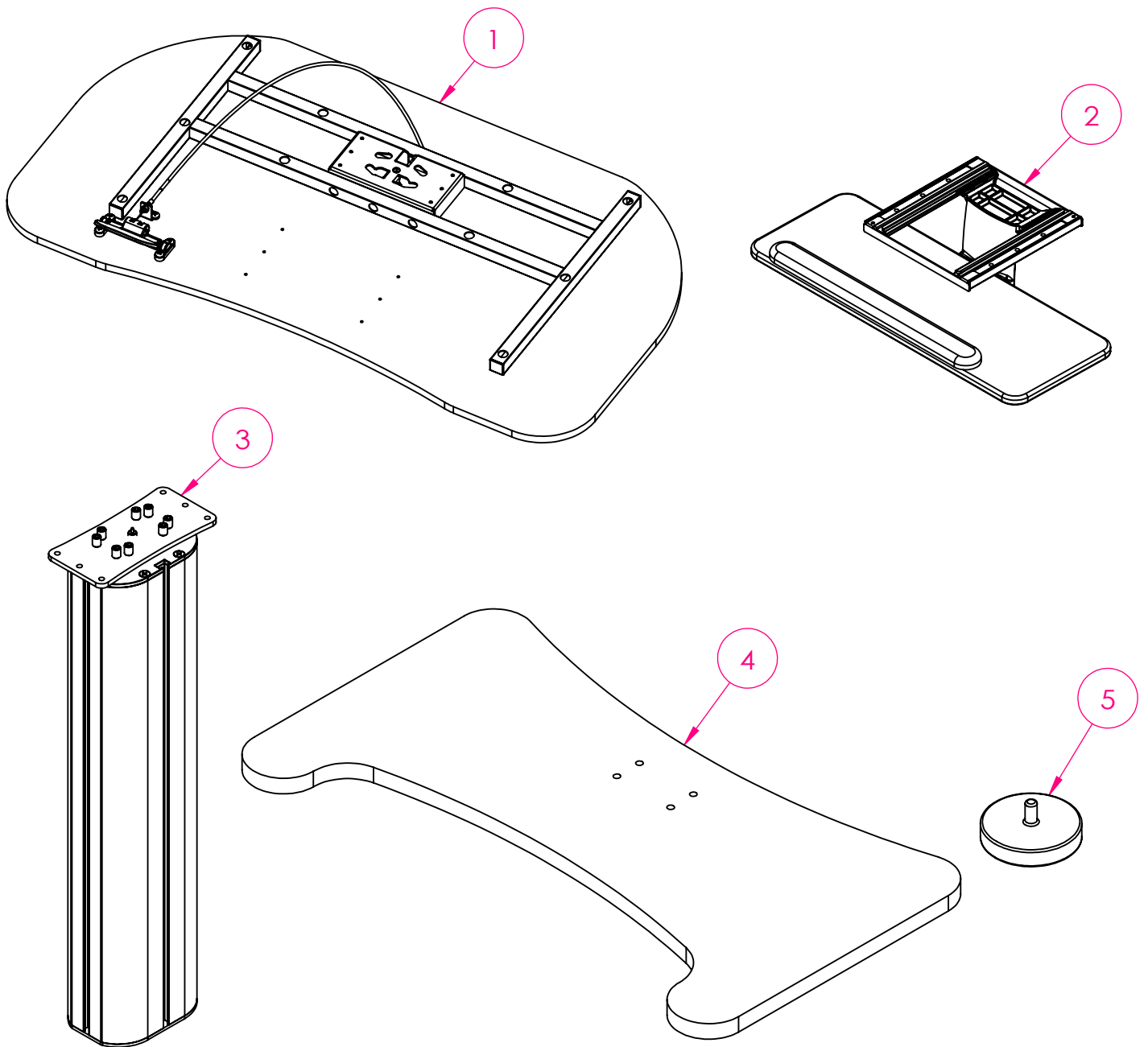


Made in Taiwan

HC107  
組裝說明書  
Installation Instruction



零組件編號 Part No.	零組件名稱 Part Name	零組件數量 Part Qty.
1	桌板組 Desk set	1
2	鍵盤架 Keyboard set	1
3	立柱 Column	1
4	底座 Base	1
5	腳墊 Plastic Mounts	6

五金包編號 Package No.	單件編號 Part No.	單件數量 Part Qty.	規格 Description	圖示 Image
A	A-1	6	1/4"*19mm 尖尾木螺絲 1/4"*19mm Wood Screw	
B	B-1	6	M6*15mm 內六角螺絲 M6*15mm Hex Socket Screw	
	B-2	6	M6平面華司 M6 Washer	
	B-3	1	4mm 六角扳手 4mm Allen Wrench	
C	C-1	4	M8*30mm 內六角螺絲 M8*30mm Hex Socket Screw	
	C-2	1	5mm 六角扳手 5mm Allen Wrench	

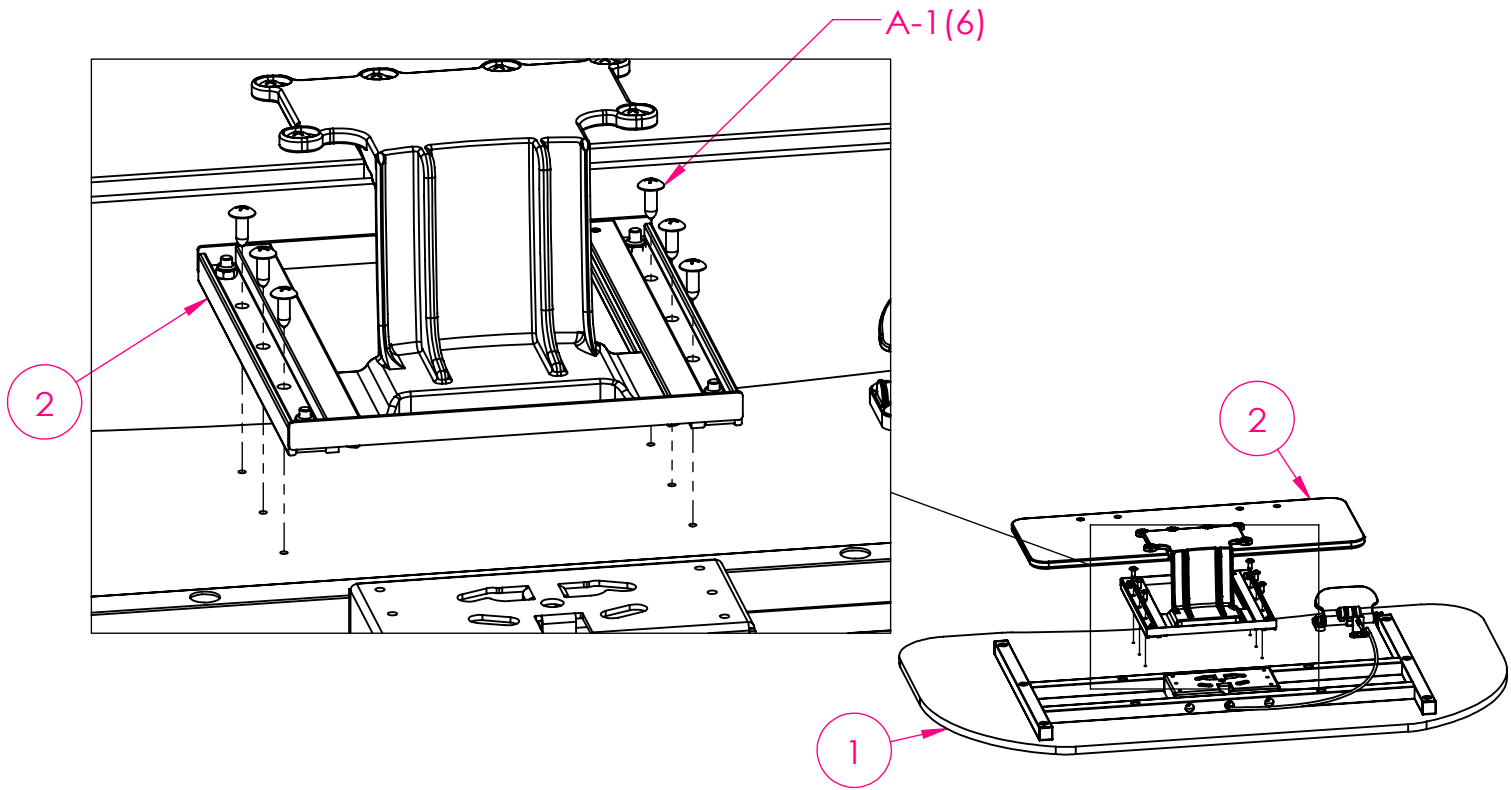
※需自備十字螺絲起子

※ADDITIONAL TOOLS REQUIRED

Phillips Screwdriver

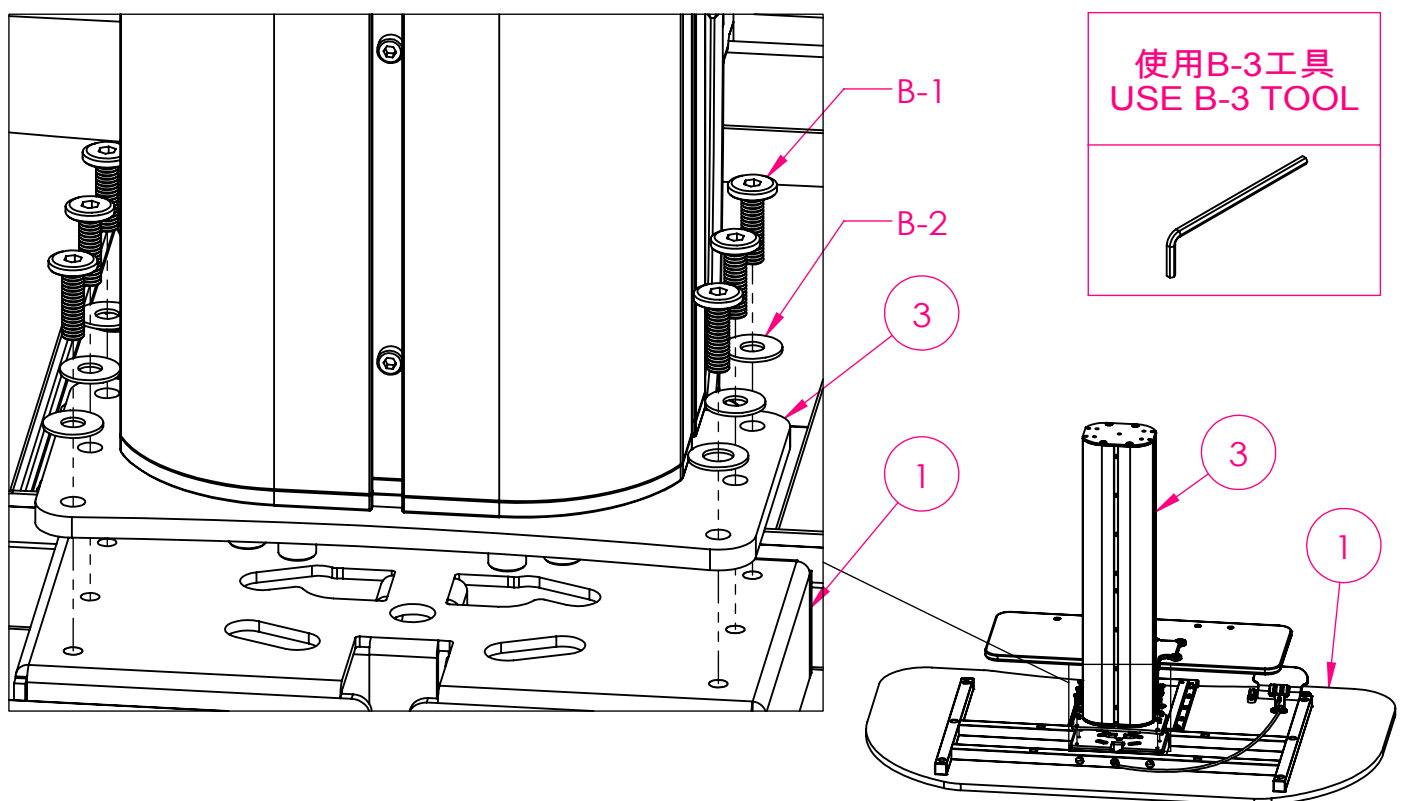
步驟一：使用十字螺絲起子與(A-1)把②鍵盤架組固定在①桌板上。

Step 1 : Use phillips screwdriver and (A-1) Screw to fix ②Keyboard set and ①Desk set together.



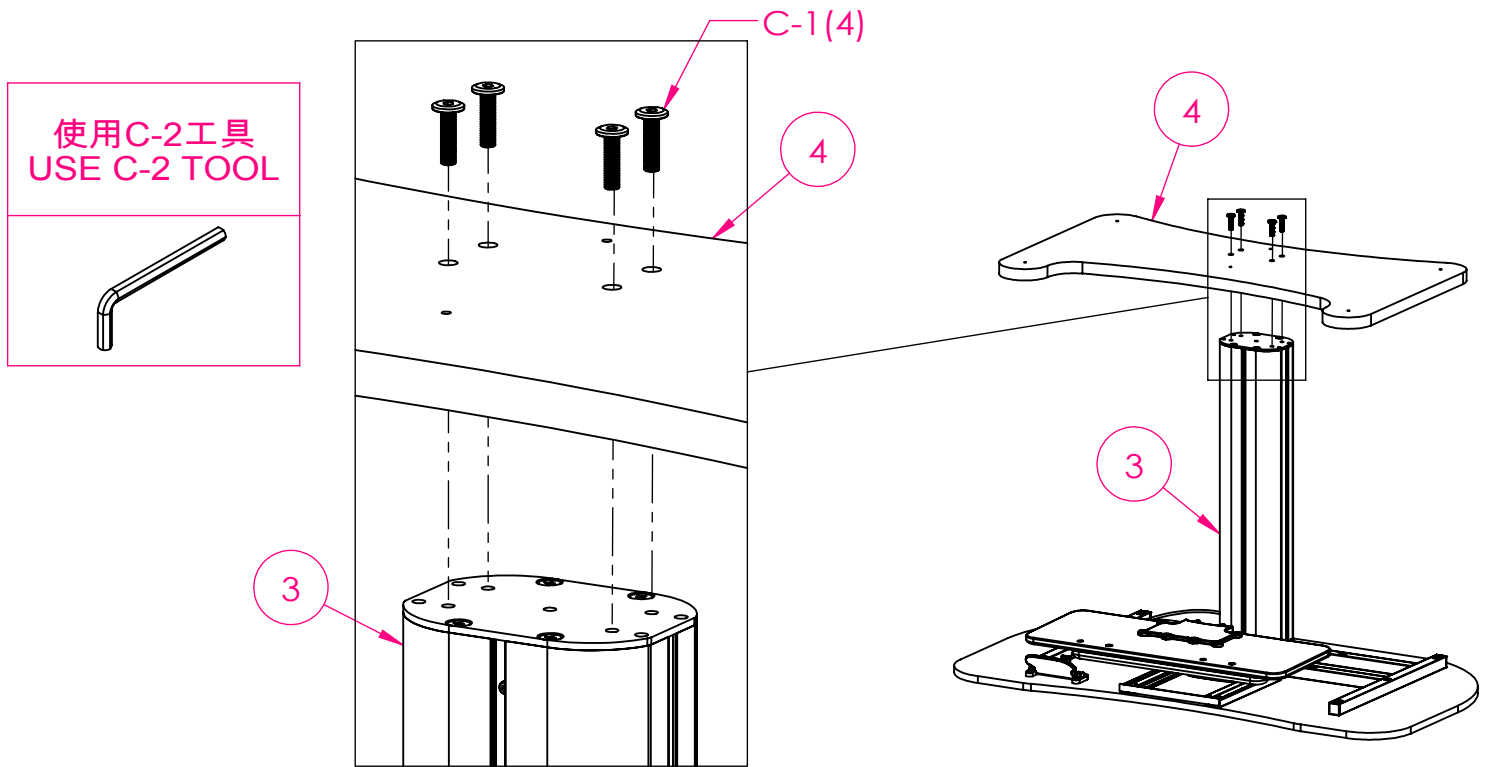
步驟二：使用(B-3)六角扳手、(B-1)螺絲以及(B-2)平面華司把③立柱固定在①桌板上。

Step 2 : Use (B-3)Allen wrench ,(B-1)Screw and (B-2)Washer to fix ③Column and ①Desk set together.



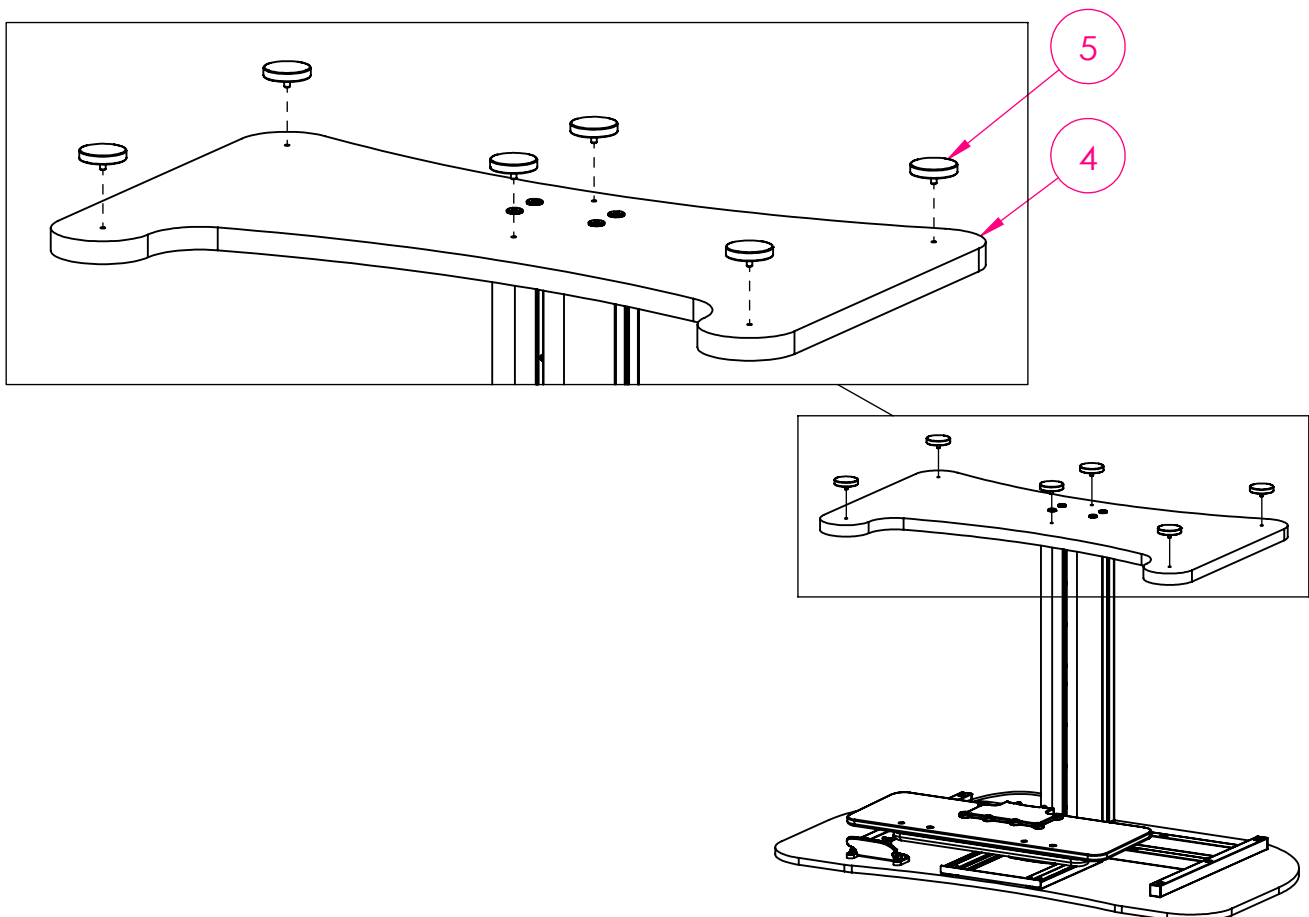
步驟三：使用(C-2)六角扳手與(C-1)螺絲把④底座固定在③立柱上。

Step 3 : Use (C-2)Allen wrench and (C-1)Screws to fix ④Base and ③Column together.



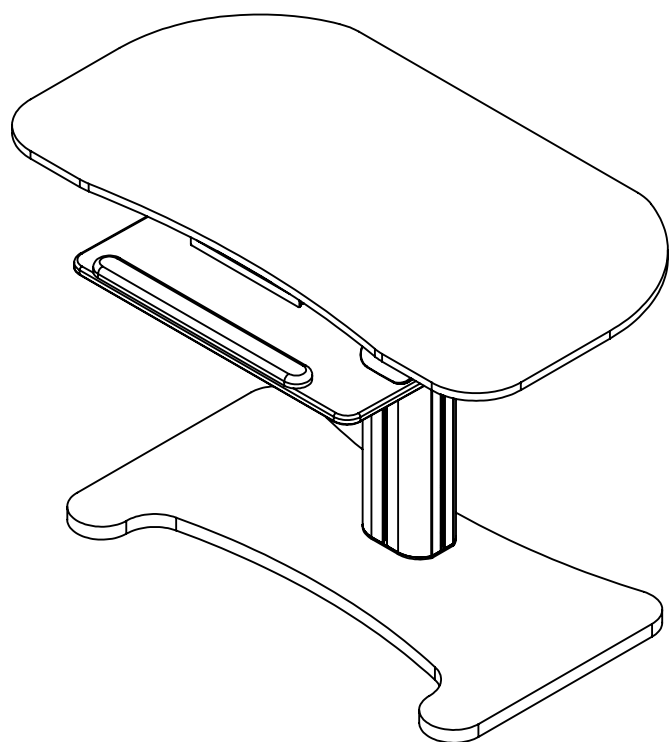
步驟四：把⑤腳墊鎖進④底座。

Step 4 : Lock ⑤Plastic Mounts with ④Base together.



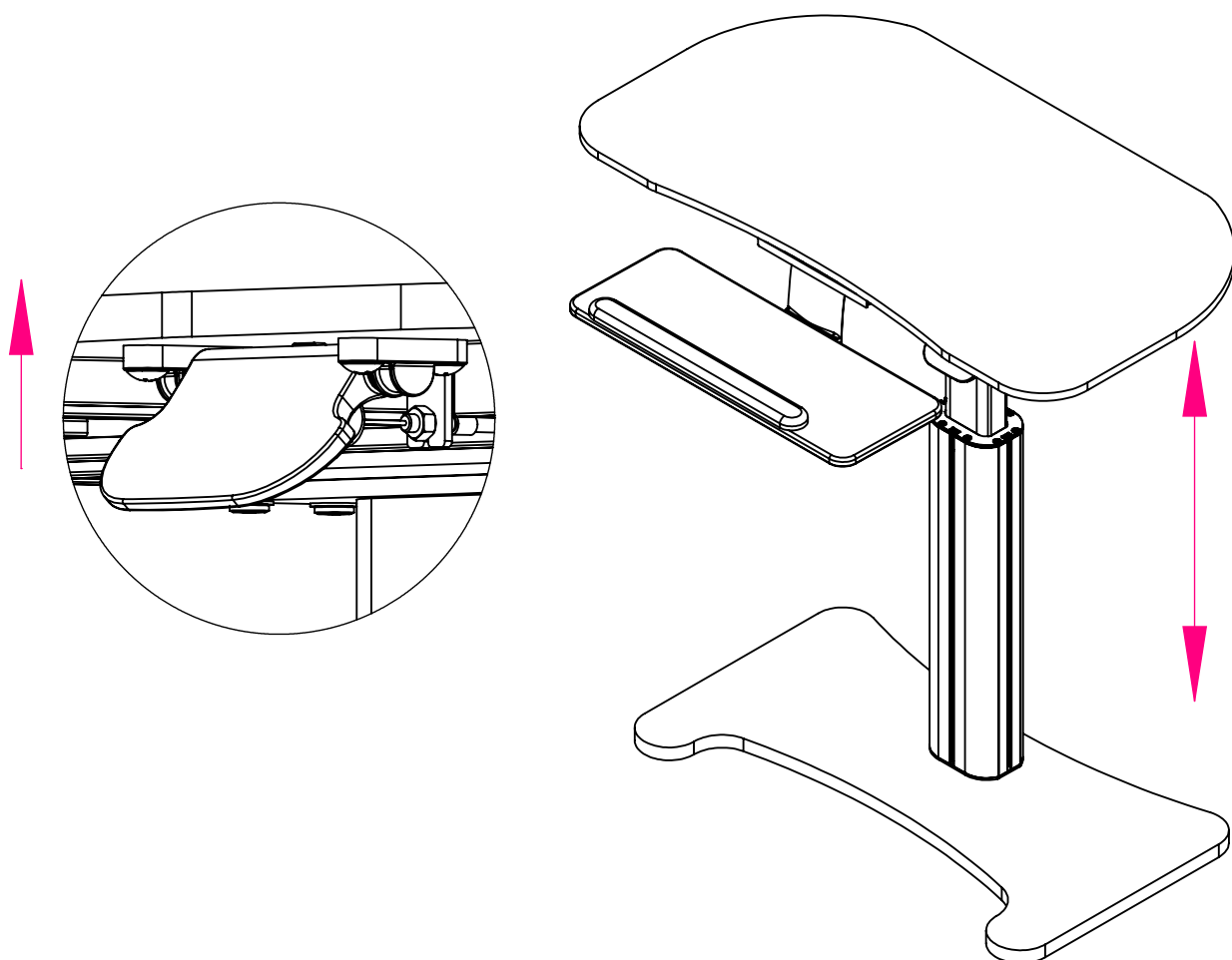
步驟五：把桌子立起，完成組裝。

Step 5 : Stand up the table, complete the assembly.



升降功能：  
按壓把手即可升降桌面，到需要的高度時鬆開即可固定。

Height Adjustment Function :  
Press the handle to raise or lower the desk.  
When it reaches the desired height, release the handle to lock it in place.





程鼎實業股份有限公司

台灣台中市大雅區神林路一段526號

Tel:886-4-25679181 Fax:886-4-25669582

統一編號：80112978

Website: [www.cdgreat-officefurniture.com](http://www.cdgreat-officefurniture.com)

C.D. Great Furniture Co., Ltd.

No.526, Sec. 1, Shenlin Rd., Daya Dist., Taichung City 428, Taiwan.

Tel:886-4-25679181 Fax:886-4-25669582

Website : [www.cdgreat-officefurniture.com](http://www.cdgreat-officefurniture.com)